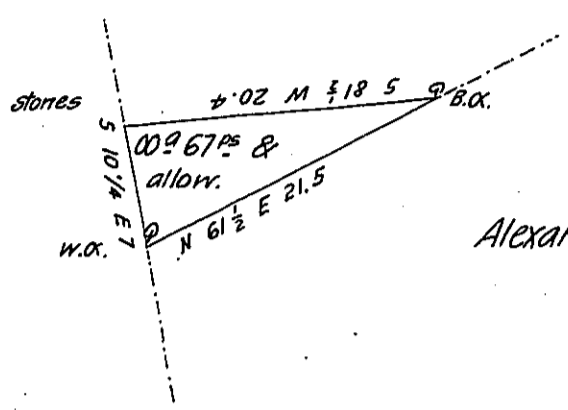


Christopher Qigley's heirs

John Rode



Alexander Qigley

A Draught of a piece of Land situate in Allen Township Cum-
 berland County Containing sixty seven perches and the usual allowance of
 six per cent for Roads &c. Surveyed the 3^d day of September A. Domini 1814
 in pursuance of a warrant granted to Henry Qigley for two acres of land
 dated the fifteenth day of August A. Domini 1814

Wm Line D. S.

To Rich^d T. Leech Esq.
 Surveyor General Pa

IN TESTIMONY that the above is a copy of the original remaining on file in
 the Department of Internal Affairs of Pennsylvania, made
 conformably to an Act of Assembly approved the 16th day of
 February, 1833, I have hereunto set my Hand and caused
 the Seal of said Department to be affixed at Harrisburg,
 this.....twenty third.....day of.....May.....1906

Loac A. Brown
 Secretary of Internal Affairs.